

EVOLUTION™ CORNER

Comfortable two person design with dual back support positions, integral seat and installed grab bar. **Includes factory installed Safe-T-Heat Whirlpool Heater.**

6060V Whirlpool

- Acrylic with fiberglass reinforcement
- 2.1 HP self-draining pump/motor
- Ten flow adjustable jets including:
 - Two adjustable Comfort Jets™ Hi Flo
 - Eight adjustable Comfort Jets™
- Three silent air volume controls
- Side-mounted On/Off control
- Complete factory installed and tested whirlpool system
- Pre-installed Safe-T-Heater Whirlpool Heater

6060VC Whirlpool W/EverClean® System

- Same as above with the EverClean System

Nominal Dimensions:

1384 x 1384 x 546mm
(54-1/2" x 54-1/2" x 21-1/2")

Installed Size:

1949 x 1661 x 546mm
(76-3/4" x 65-3/8" x 21-1/2")

Compliance Certifications -

Meets or Exceeds the Following Specifications:

- Underwriters Laboratories - Hydromassage Bathtubs UL 1795
- ASME A112.19.7M for Whirlpool Appliances
- ANSI Z124.1 for Plastic Bathtubs
- ASTM E162 for Flammability
- NFPA 258 for Smoke Density

American Standard whirlpools with EverClean® incorporate a patented silver-ion additive right into the circulation piping to protect the pipes from mold, mildew, algae and fungus that could cause deterioration or staining of the pipes.

SEE REVERSE FOR PRODUCT DIMENSIONS AND SPECIFICATIONS



Components Required:

- Bath Filler*: (specify finish)
- Bath Drain: 1583.470 (specify finish)

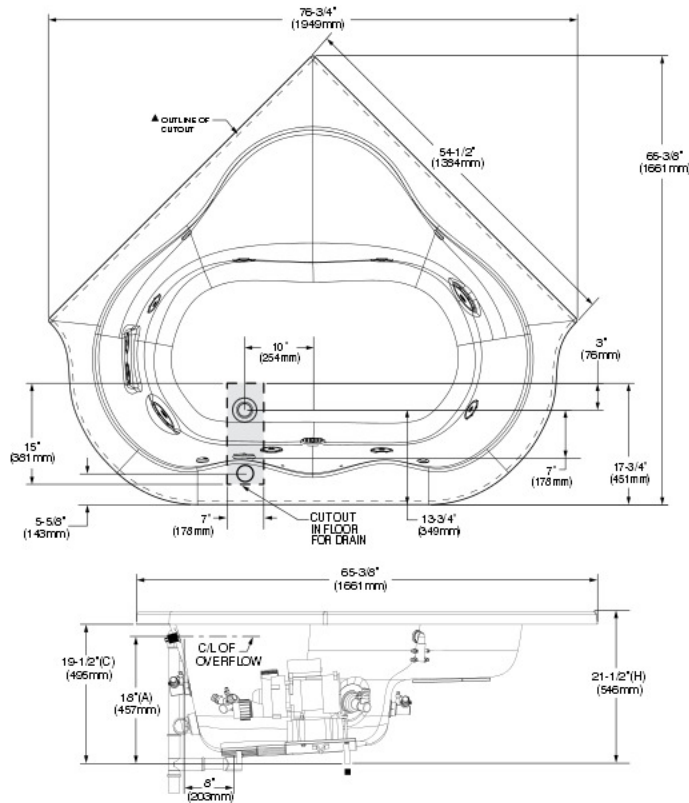
Custom Accessories Available:

- Corner Apron: 0707.200 (specify color)
- Tile Bead Kit: 751755-100

* See American Standard Faucet Selector

For color/finish availability and other faucet choices, please see the Product Selector and Pricing Guide.

NOTE: The Safe-T-Heater is designed to maintain water temperature during operation. It will not heat cold water to desired bathing temperature.



DIMENSIONS OF FIXTURES ARE NOMINAL AND MAY VARY WITHIN THE RANGE OF TOLERANCES ESTABLISHED BY ANSI STANDARDS Z124.1 AND A112.19.7.

GENERAL SPECIFICATIONS FOR 6060V WHIRLPOOL	
INSTALLED SIZE	76-3/4 x 65-3/8 x 21-1/2 In. (1949 x 1661 x 546mm)
WEIGHT	108 Lbs. (49 Kg.)
WEIGHT w/WATER	824 Lbs. (374 Kg.)
GAL. TO OVERFLOW	86 Gal. (325 L)
WHIRLPOOL MIN. OPERATING VOL.	71 Gal. (269 L)
BATHING WELL AT SUMP	48 x 26-1/2 In. (1219 x 673mm)
BATHING WELL AT RIM	63 x 50 In. (1600 x 1270mm)
WATER DEPTH TO OVERFLOW	15 In. (381mm)
FLOOR LOADING	24 Lbs./Sq.Ft. (116 Kgs./Sq.m)
(PROJECTED AREA)	
WHIRLPOOL ELECTRICAL SPECIFICATIONS	
PUMP	2.1 HP, 14.4 AMPS, 120V.
E-Z INSTALL WHIRLPOOL HEATER	12.0 AMPS, 120V.

NOTES:

BATH CAN BE INSTALLED EITHER ABOVE OR BELOW FLOOR LINE AS PIER, ISLAND OR PENINSULA TYPE INSTALLATION. SUPPORT OF BATH BY INTEGRAL FEET. NO ADDITIONAL SUPPORT REQUIRED. SUPPORT AND ENCLOSING MATERIAL BY OTHERS.

■ REFER TO INSTALLATION INSTRUCTIONS SUPPLIED WITH WHIRLPOOL FOR ADDITIONAL INFORMATION.

OPTIONAL 2-WALL TILING BEAD KIT NO TILE-BEAD MUST BE ORDERED SEPARATELY.

▲ CUTOUT TEMPLATE PROVIDED IN SHIPPING BOX. MAY BE REQUESTED SEPARATELY.

PROVIDE SUITABLE REINFORCEMENT FOR ALL WALL SUPPORTS.

IMPORTANT: Dimensions of fixtures are nominal and may vary within the range of tolerances established by ANSI Standard Z124.1. These measurements are subject to change or cancellation. No responsibility is assumed for use of superseded or voided leaflet.